

Cisco TelePresence System EX90

INSTALLATION GUIDE



EX90 is delivered with:

- EX90 unit
 - Touch screen with cable
 - Handset base with cable
 - Handset
 - AC adapter and power cable
 - Screwdriver
 - Cleaning cloth
- Cables:
- DVI-D to DVI-I cable (recommended for optimal PC image quality)
 - VGA to DVI-I cable
 - Stereo audio cable 3.5 mm
 - Ethernet cable

User documentation

The user documentation for this product, including compliance and safety information, is found on the Cisco web site.

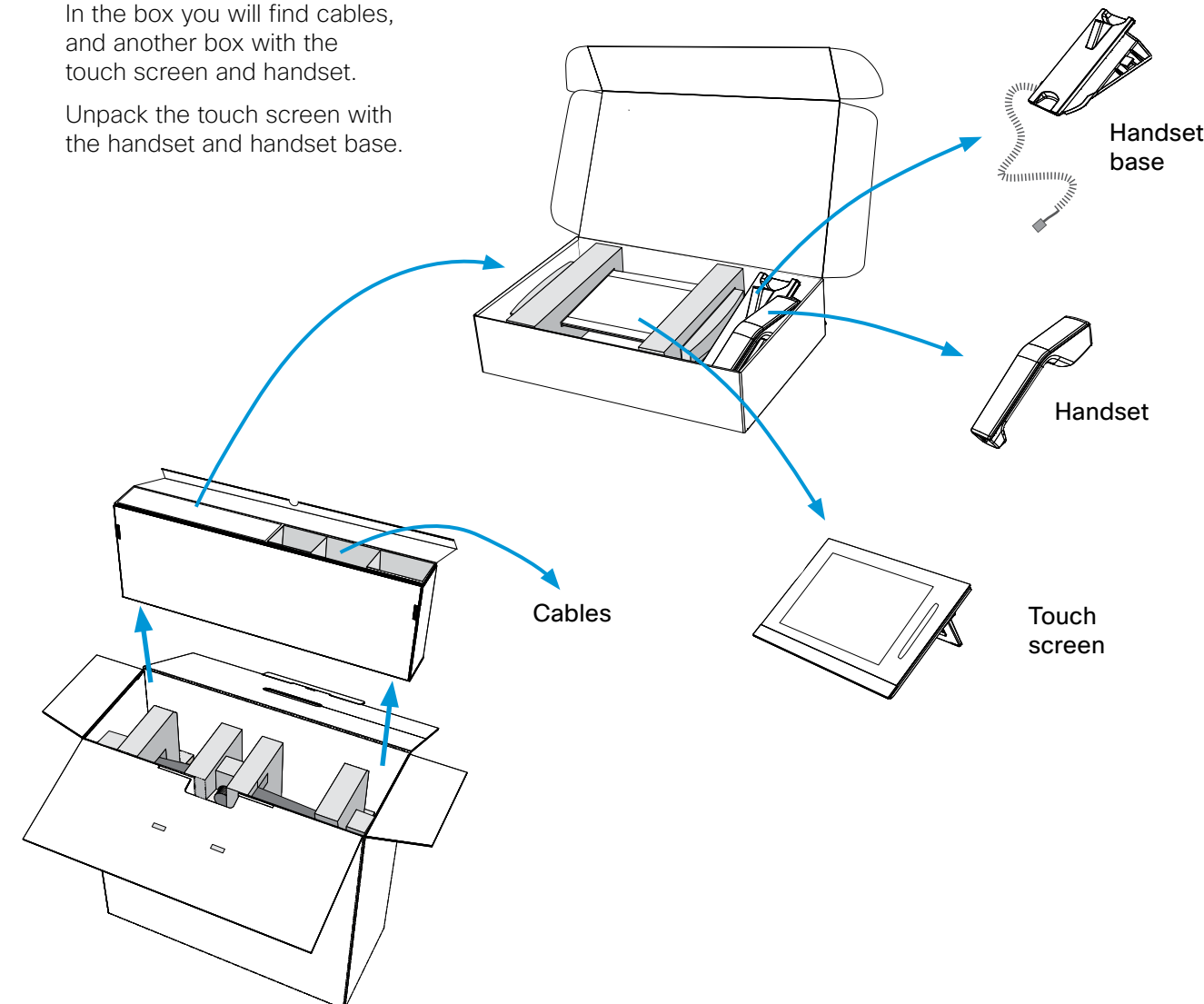
Go to: <http://www.cisco.com/go/telepresence/docs>.

1 Unpacking the touch screen and cables

Lift out the rectangular box from the package.

In the box you will find cables, and another box with the touch screen and handset.

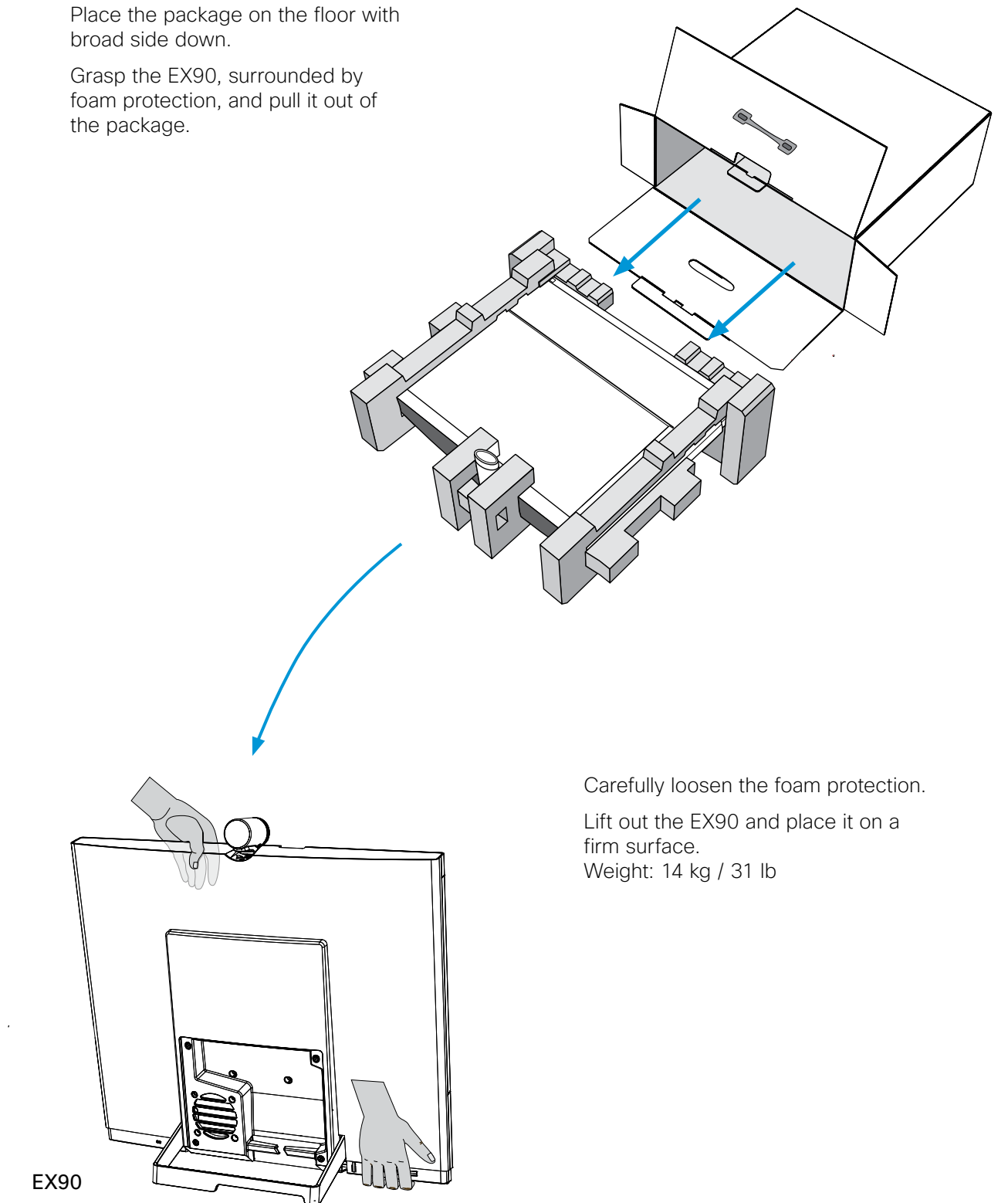
Unpack the touch screen with the handset and handset base.



2 Unpacking the EX90 unit

Place the package on the floor with broad side down.

Grasp the EX90, surrounded by foam protection, and pull it out of the package.

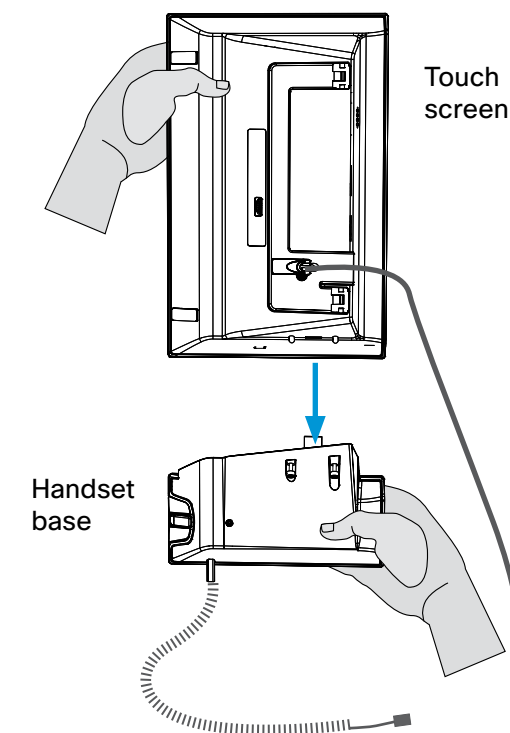


3 Optional: Mounting the handset

Tool: Screwdriver

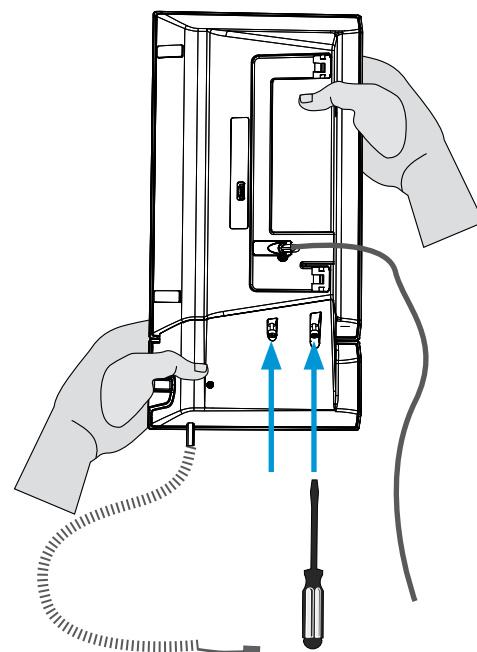
A Take the touch screen and the handset base and hold the two units in an upright position.

Move the two units together. Make sure the protruding contact on the handset base slides into the corresponding hole on the touch screen.

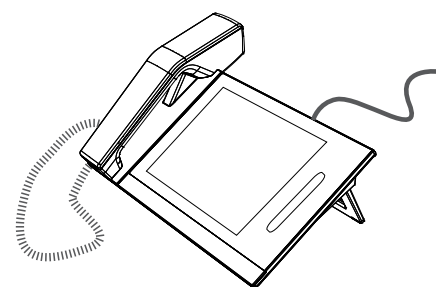


B Fasten the two units together. The screws are pre-mounted in the handset base.

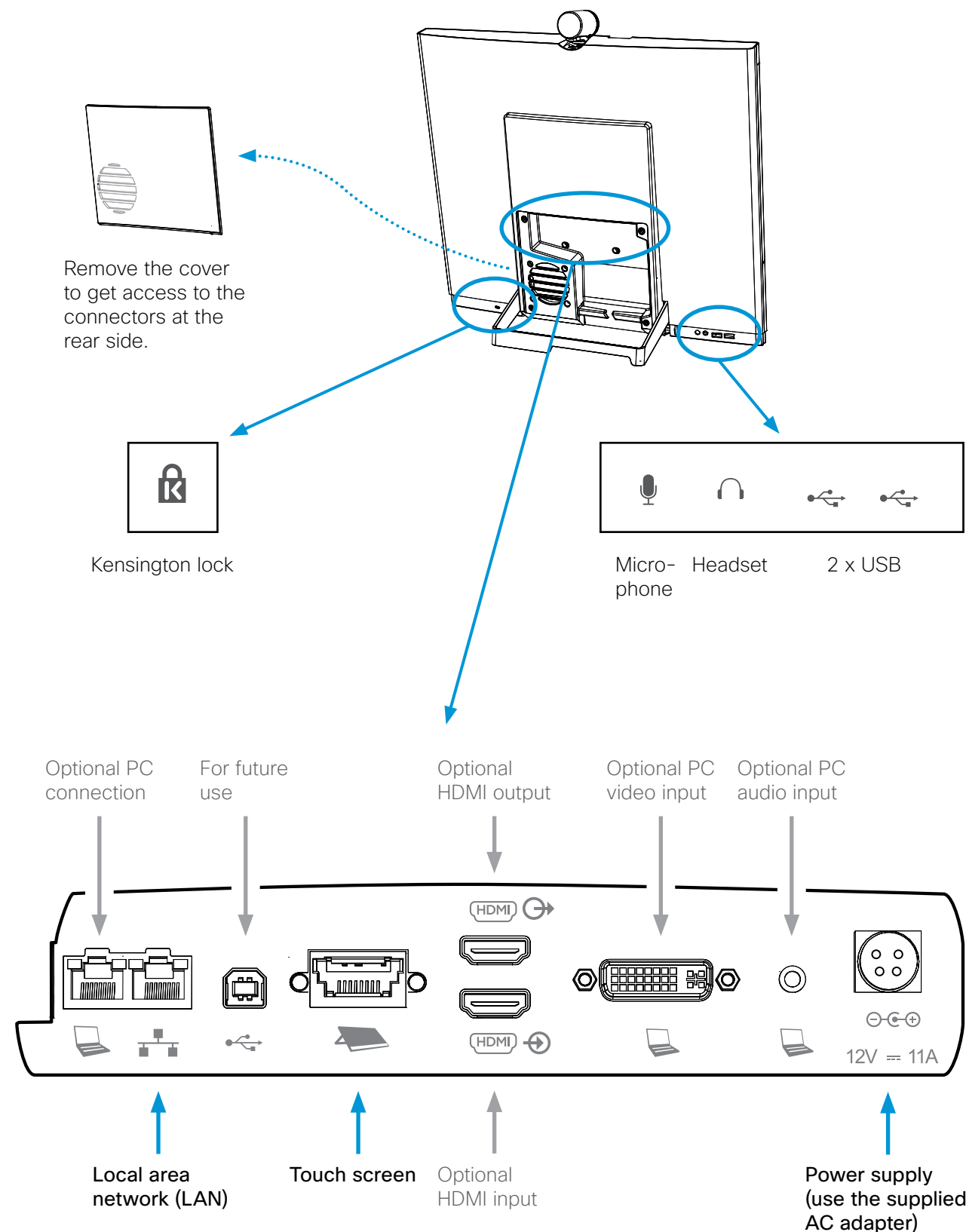
Use the screwdriver and fasten the screws at the handset base from the underneath.



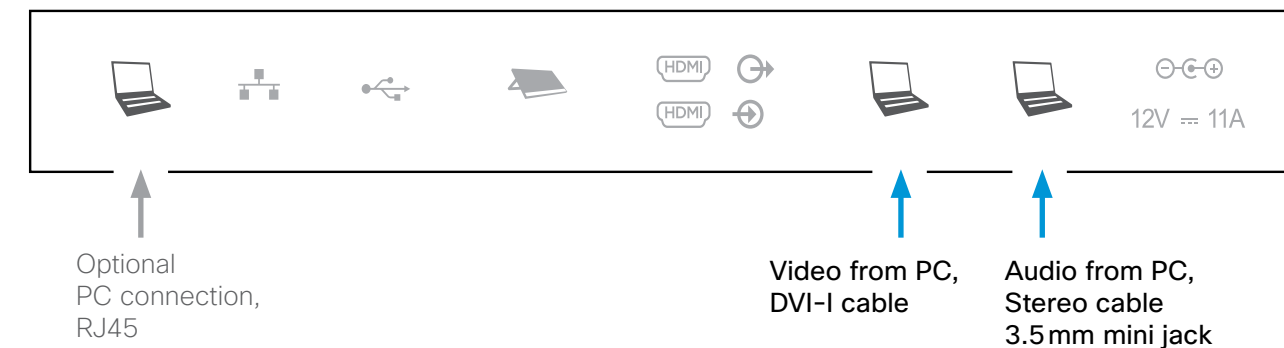
C Connect the handset to the handset base, and connect the handset cable.



4 System overview and basic setup



5 Connecting a PC



The optional PC connection

If you have a single LAN wall outlet only, you may connect your PC to the PC-socket of EX90. Your PC and the EX90 will then share the LAN connection.

Cables

The cables are found in the long rectangular box, see the previous page.

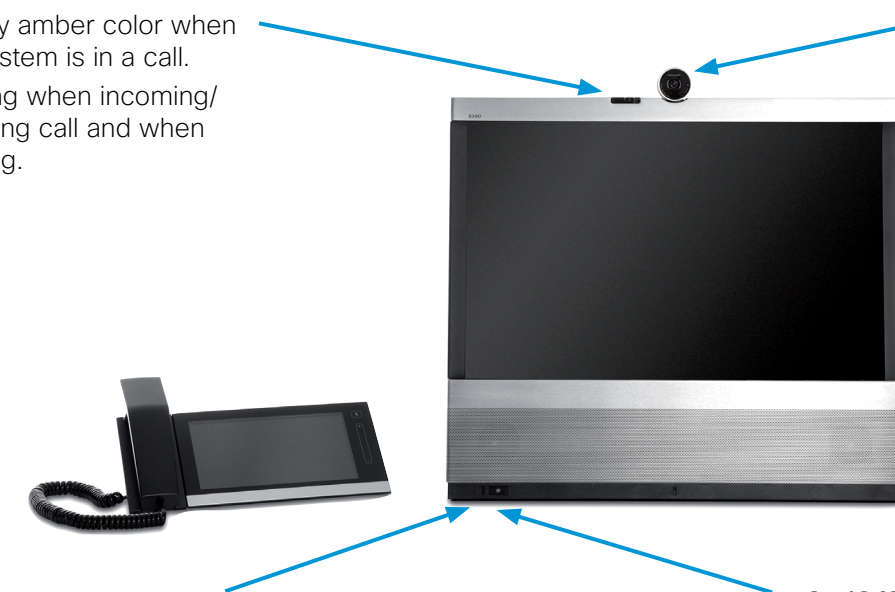
6 Starting the system

LED

- Steady amber color when the system is in a call.
- Blinking when incoming/outgoing call and when booting.

Camera

- Turn to open/close the privacy cover.
- Tilt downwards to use as document camera.



LED

- Steady green color when the system is in use.
- Blinking when in standby.
- Blinks once when the touch button is pressed, to indicate registered activity.

On/Off touch button

- Tap the touch button once to turn on/off the monitor.
- Press gently and hold the touch button to shut down the system.